

PART S.W. 1/4 SEC. 21, T.7N., R.1W., S.L.B. & M.
LAKEVIEW HEIGHTS SUBDIVISION-PH. 2A
A PLANNED RESIDENTIAL UNIT DEVELOPMENT

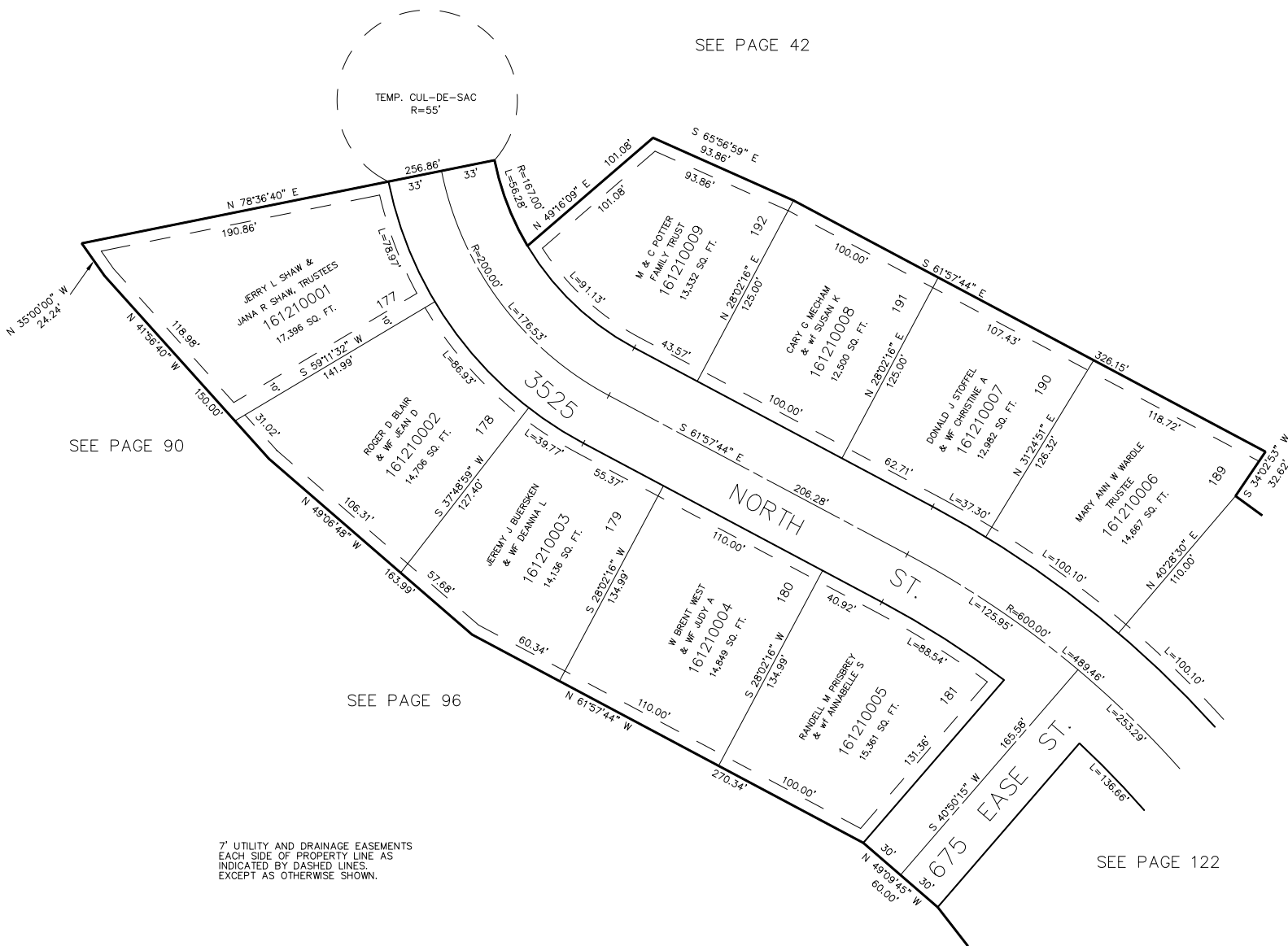
TAXING UNIT: 10

IN NORTH OGDEN CITY

SCALE 1"=50'

SEE PAGE 42

TEMP. CUL-DE-SAC
R=55'



SEE PAGE 90

SEE PAGE 96

SEE PAGE 122

7' UTILITY AND DRAINAGE EASEMENTS
EACH SIDE OF PROPERTY LINE AS
INDICATED BY DASHED LINES.
EXCEPT AS OTHERWISE SHOWN.

FOR COMPLETE ENG. DATA
SEE ORIG. DED. PLAT IN
BOOK 27, PAGE 97.